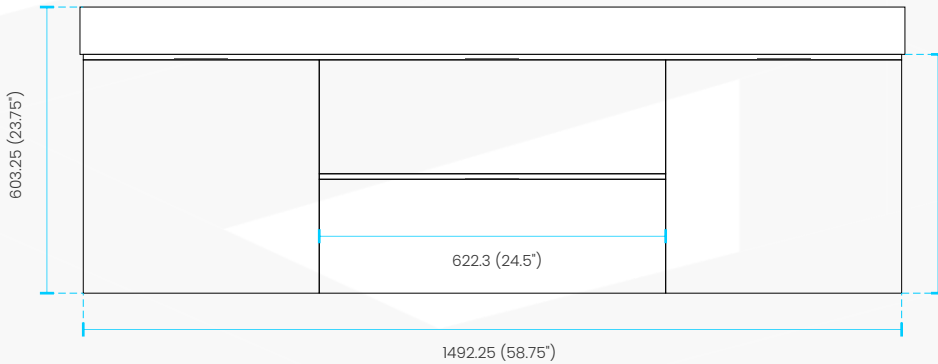
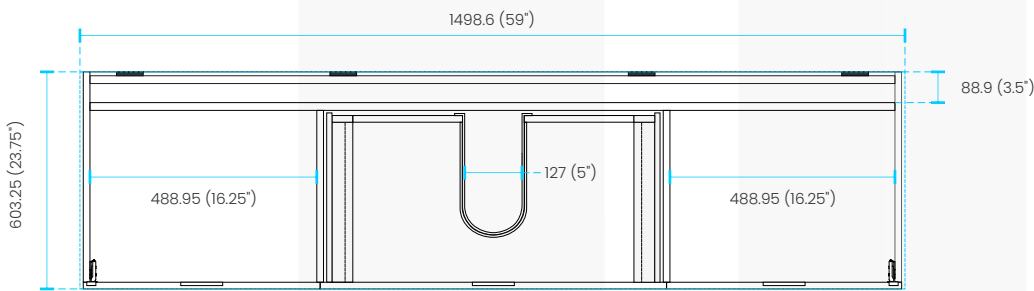
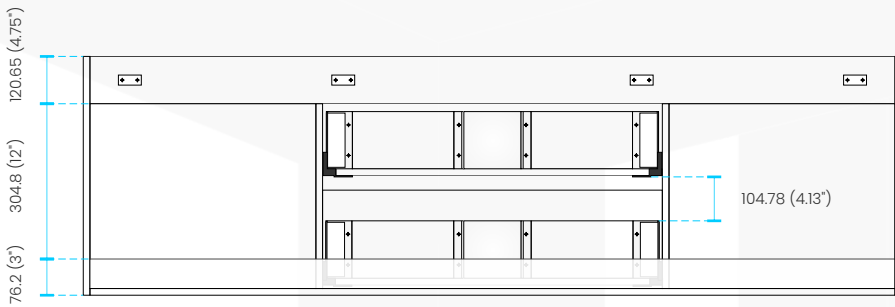


Dimensions:	width	depth	height
inches	59"	18.5"	23.75"
mm	1499	470	603

COUTERTOP SKU# **BSL60SSINK**



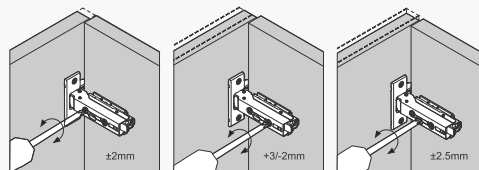
501.65 (19.75")



Adjustments

The options for height adjustment depend on the type of base plate. All adjustments can be made independent of one another.

For depth adjustment, select base plates have worm gear adjustment access through the hinge arm.



Side adjustment

Depth adjustment via worm gear

Height adjustment via base plate

Reveal

The reveal (R) is the distance required between two doors or between the door and side wall of the cabinet to allow sufficient space for opening the door. The required reveal width (R) depends on the thickness of the door.

Most cabinet makers prefer a reveal (R) of between 3mm and 6mm.

